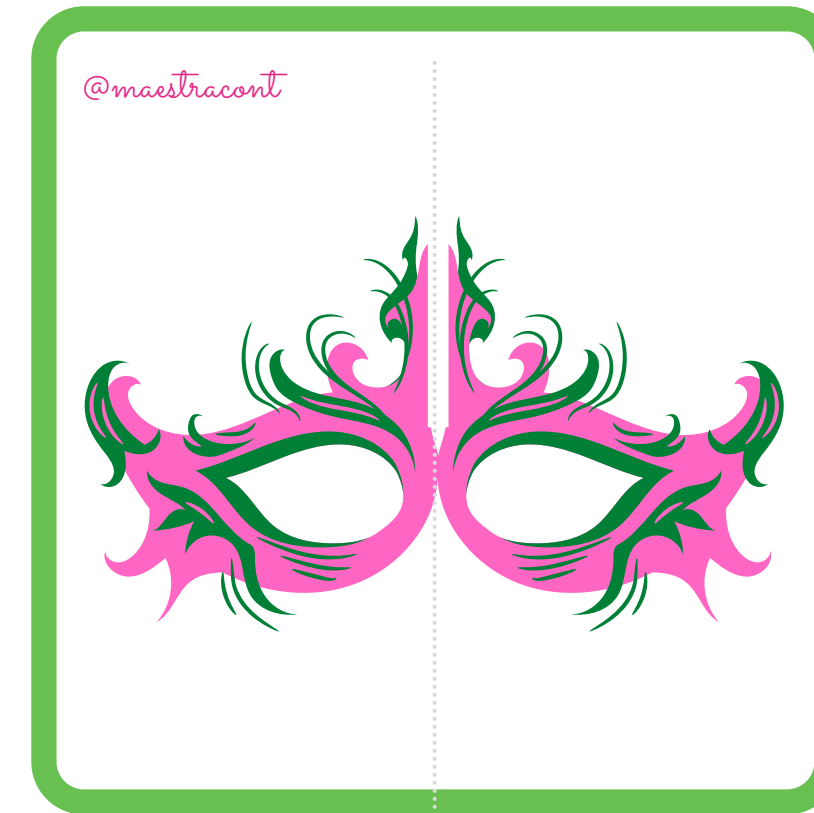
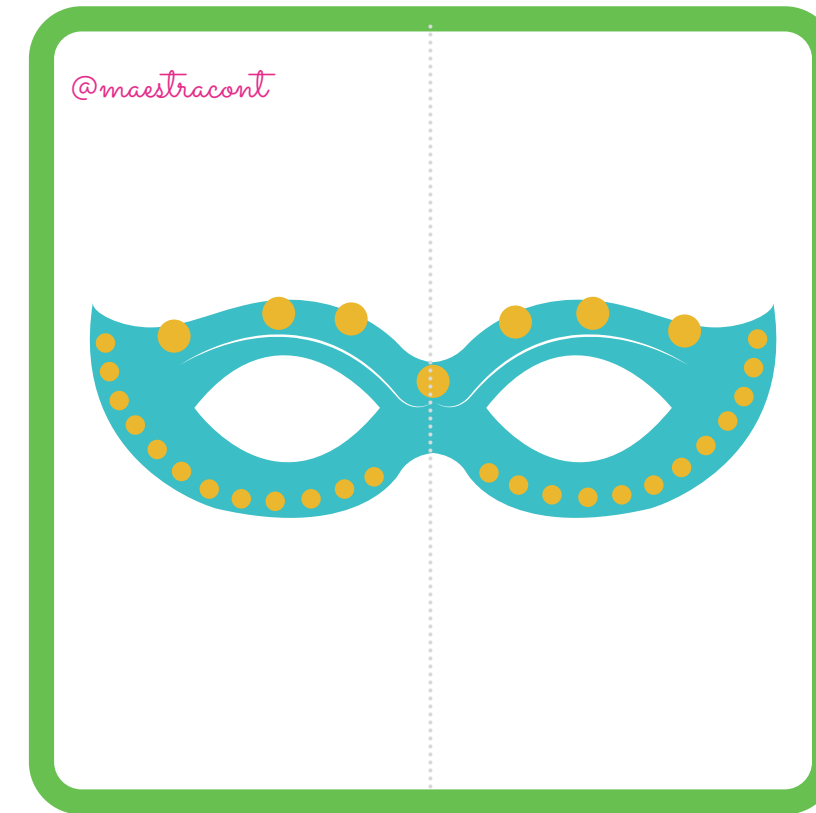
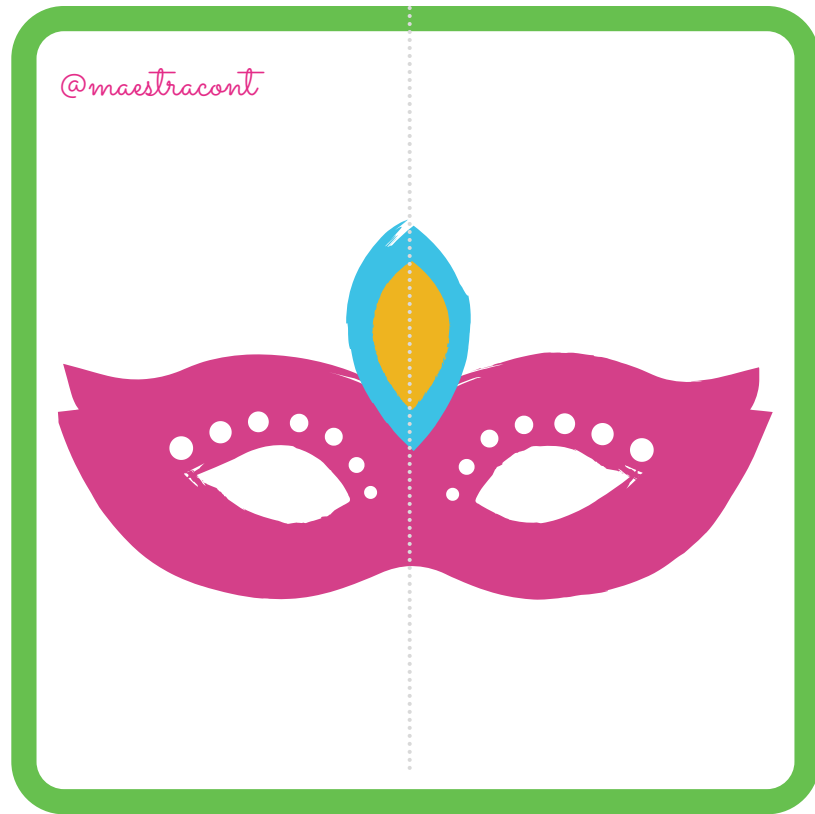


SIMETRÍA ANTIFACES DE CARNAVAL

RECORTAR POR LA MITAD PARA JUNTAR LAS MITADES SIMÉTRICAS DE CADA ANTIFAZ.
TAMBIÉN HAY MITADES DE ANTIFACES PARA HACER LA SIMETRÍA A LÁPIZ Y COLOREARLA.

@maestracont



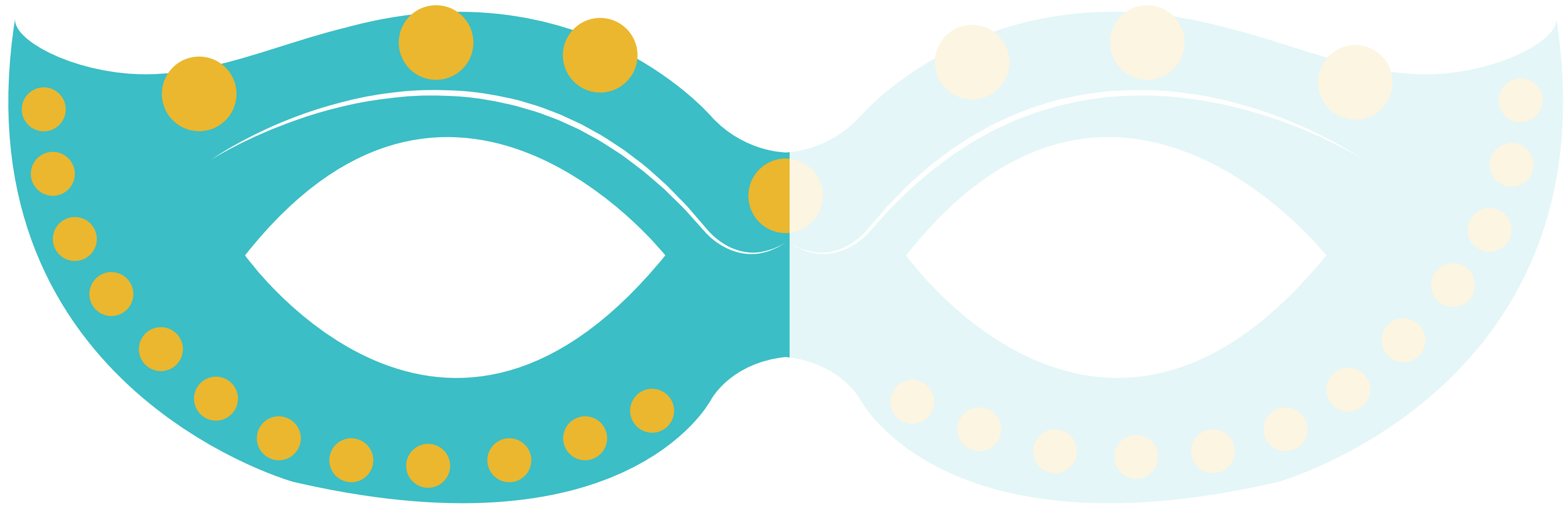
@maestracont



@maestracont



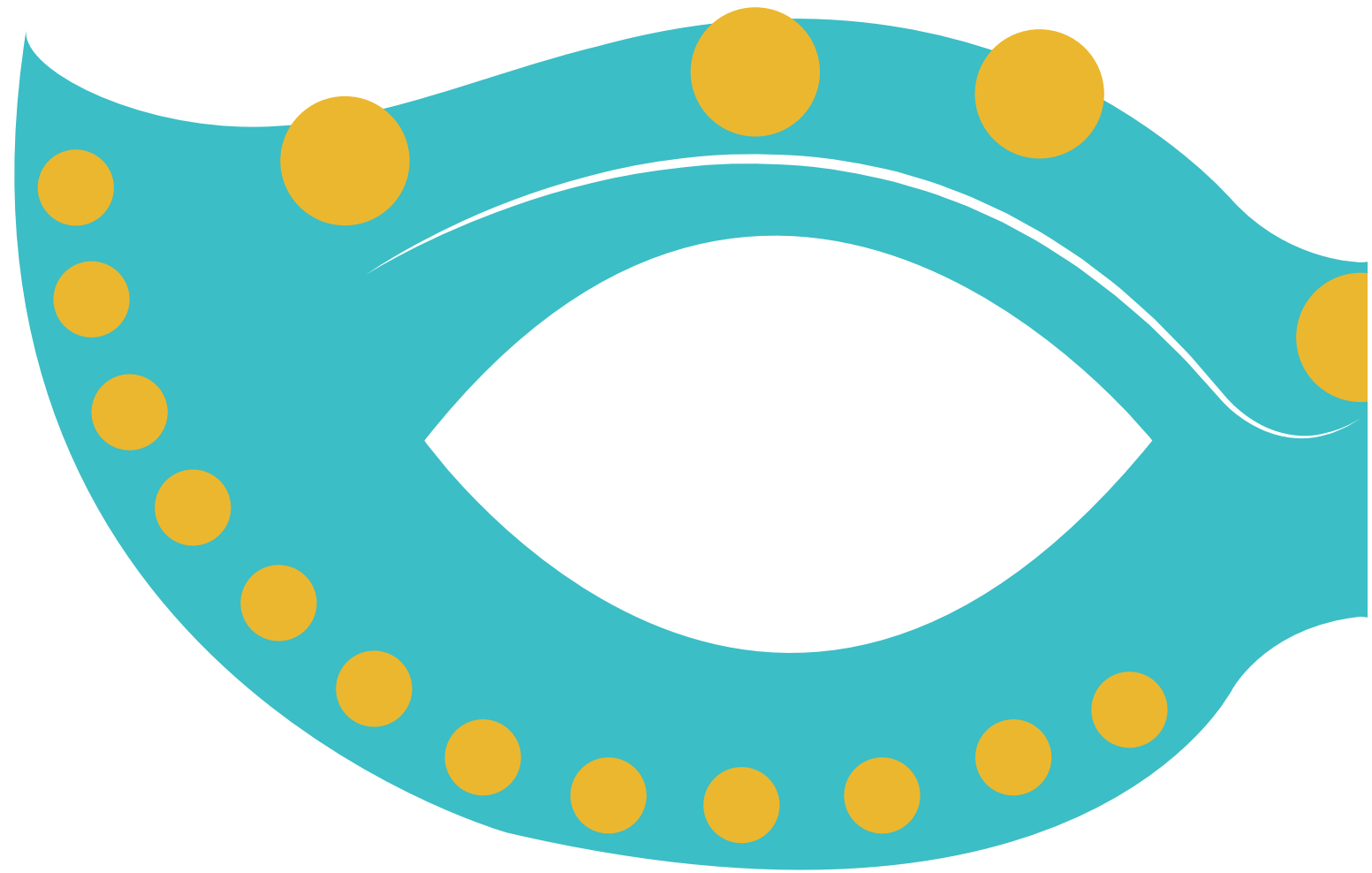
@maestracont



@maestracont



@maestracont



@maestracont

